



# Emergency Medical Services #37

2610 Fairburn Rd. Atlanta, GA

Request for Qualifications  
Small plaza with sitting area



City of Atlanta Mayor's Office of Cultural Affairs  
and  
Department of Enterprise Asset Management

# OVERVIEW

The Mayor's Office of Cultural Affairs (OCA) is partnering with the Atlanta Department of Enterprise Asset Management (DEAM) to commission artwork for a new Emergency Medical Service building, currently under construction. The OCA invites artists / architects / and design teams to submit qualifications to be considered for a modern, innovative design for a small plaza and sitting area in front of this new construction. The design must compliment the building's minimalist esthetics.

Project must be completed by **9/22/2022**



## BEN HILL COMMUNITY

This new EMS station will be located in the [Ben Hill Community](#) in Southwest Atlanta. This community sits west of I-285, and was first settled in the 1820s. The area was originally known as Mount Gilead Cross Roads, where the [Judge William Wilson House](#) is located, one of a handful of antebellum buildings in the City of Atlanta. This facility has been designed by Goode Van Slyke Architecture. This facility will be part of NPU P and City Council District 11.

[Article on annual Christmas Celebration at Fire Station 16](#)

[Article about Atlanta's first black Fire Fighters](#)

## CITY OF ATLANTA MAYOR'S OFFICE OF CULTURAL AFFAIRS

The [City of Atlanta's Mayor's Office of Cultural Affairs \(OCA\)](#) was established in 1974 to encourage and support Atlanta's cultural resources. The initial mission was to solidify the role that arts and other cultural resources play in defining and enhancing the social fabric and quality of life of Atlanta citizens and visitors.

Today the OCA understands that the arts play an essential role in defining the cultural vitality of the city and is working to enhance Atlanta's reputation as a cultural destination. The OCA aims to provide programs that contribute substantially to the city's economy and quality of life.

## ARTIST ELIGIBILITY

- The City of Atlanta is seeking qualifications from artists / architect / design teams.
- Selected artists and/or teams must reside or conduct their business within City of Atlanta limits.
- Open to authorized U.S. residents only. The City of Atlanta participates in E-Verify and will provide the federal government with your Form W-9 information to confirm that you are authorized to work in the U.S.
- All applicants, regardless of race, sex, religion, nationality, origin or disability will be considered. Artists will be selected via an artist selection committee including professional artists, community stakeholders, and partnering agencies.

## BUDGET

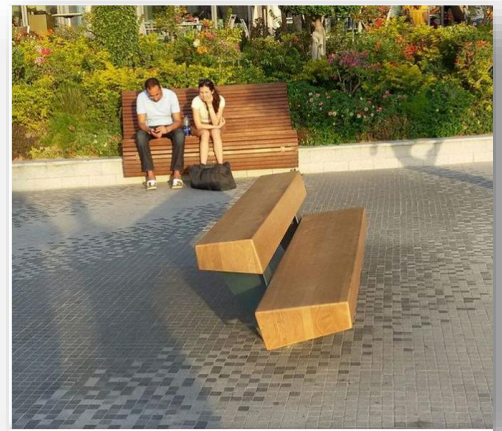
- Top three selected artists/designer will be asked to submit proposals. These artists/designers will receive **\$700 each** for their proposal.
- The selected design will receive an all-inclusive fee of up to **\$30,000**.
- The artist/ designers will be responsible for the design, materials, fabrication, installation, and transportation of bench but only the design for the pavers is required.
- Lighting design must also be considered in the design, if not already incorporated into your proposal.
- The artist will also be required to obtain insurance listing the City of Atlanta and the construction firm as additionally insured before starting work.
- Any required travel is the responsibility of the selected artist/s.

### Payment Schedule:

- **First payment draw : \$20,000**
- **Second draw, upon completion: \$10,000**

## SCOPE

- See measurement of plaza in the last page of this documents.
- Construction grade paver design for plaza.
- Design, manufacture, shipment, and installation of bench.
- Lighting design, if not already part of proposal.



## SELECTION CRITERIA

Artwork will be selected via an artist selection committee including professional artists, community stakeholders, and partnering agencies

Proposals will be evaluated based on the following criteria:

- Originality of Design
  - Is the design unique and original?
- Creative Merit of Design
  - Is the design visually and/or conceptually stimulating?
- Design's relevance to building and/or surrounding community?
  - How will the design interact with the design of the building?
  - Is the subject matter or design relevant and appropriate for the audience in this community?
- Previous professional experience
  - Does the submitted portfolio examples show design merit and support the project's feasibility?
  - Demonstrated project management leading to a successful, innovative and effective approach to a design of a similar scope.

## REQUIRED APPLICATION MATERIALS

- Past work samples a PDF document with up to 6 High-res images of completed past designs. Please list title, location, date completed, medium, and budget. Images should show past experience with bench design as well as paver design.
- Résumé: a PDF outlining professional accomplishments (maximum 2 pages per person). Include three professional references (name, affiliated organization, email address and phone number).





## TIMELINE

### Questions:

Questions and requests for clarification regarding this RFQ must be directed in writing to the contact person listed below. The deadline for submitting such questions/clarifications is 4.5.22. All responses that are material in nature will be shared with all applicants.

For Questions, Please Contact:

Briana X. Camelo

Public Art Project Coordinator

[bxcamelo@atlantaga.gov](mailto:bxcamelo@atlantaga.gov)

### How to Apply:

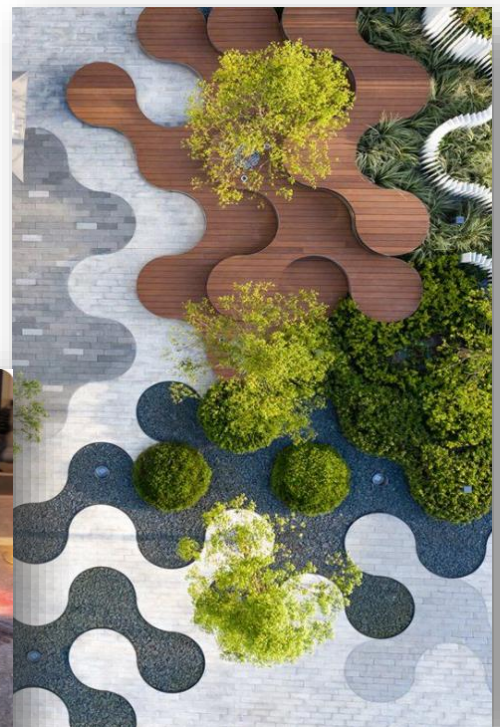
Send completed proposal packet as one PDF to [bxcamelo@atlantaga.gov](mailto:bxcamelo@atlantaga.gov) with the subject line **QUALIFICATIONS EMS #37 BENCH and PAVERS –NAME**

Proposals due:

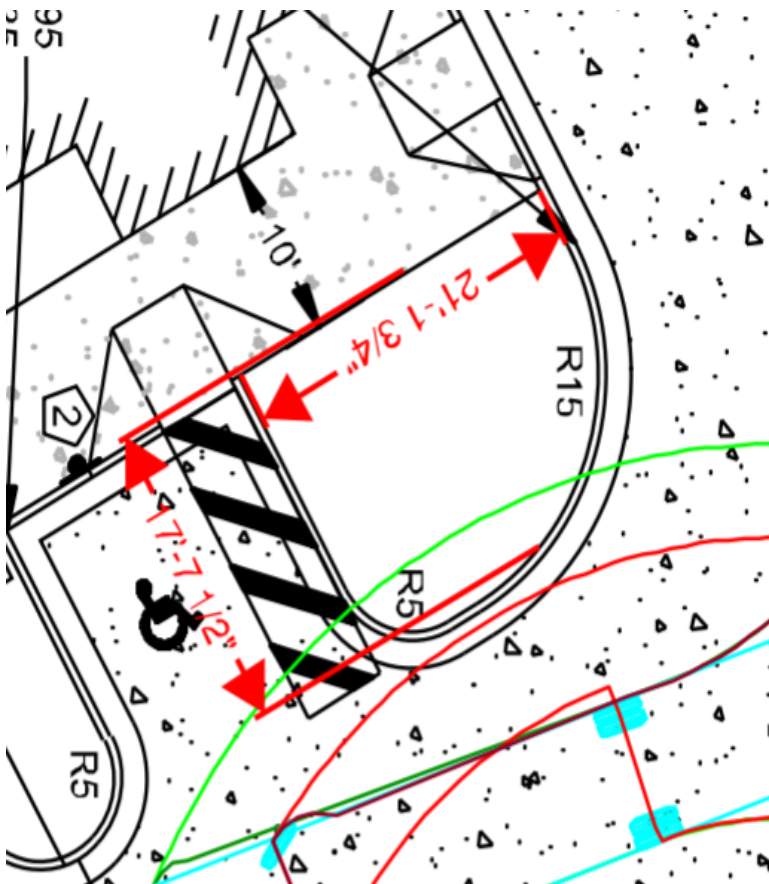
- Electronic proposals must be received no later than **April 8, 2022 by 5pm EST**. Proposals received after will not be considered.

Schedule Dates:

- **4.8.22 at 5pm EST** : Qualifications due
- 4.13.22: Panel review of portfolios
- 4.18.22: Finalists notified
- 5.16.22: Top three artist's proposals due
- 5.20.22: Top three artist's presentations to panel
- 5.27.22: Announcement of finalist
- 9.22.22: Deadline for project



# Rendering of EMS #37 Building with Plaza Area Measurements



Plaza area sits right outside of main entrance to the building, as signaled by red arrow.

Measurements are:  
21' – 1 3/4" by  
17' – 7 1/2"